

PRODUCT NAME: HYDRANT VALVE , SINGLE OUTLET STAINLESS STEEL.

Product Code: VRX-DHV



DESCRIPTION:

Hydrant valves (also called Landing valves) provide the means to draw water for firefighting from the Fire water piping network. They are normally mounted onto stand posts, fitted on the fire water network.

Brief Description: Hydrant Valve –Type A, ISI marked (IS:5290), made of StainlessSteel (SS304), having 75mm flanged inlet, and 63 mm Female Instantaneous outlet, provided with C.I. handwheel for operation, and PVC blank cap with chain. Body duly painted with 2 coats of superior quality paint. H.P. tested 21 kgf. /cm² (body) and 14 kgf. /cm² (seat). Flow 900 lpm (min) at 7kgf/cm²

GENERAL DATA:

| Sl No | Particular | Specification |
|-------|--------------------------|--------------------------------------|
| 1 | Make | VariEx |
| 2 | Size | 63mm |
| 3 | Inlet | 80mm NB IS: 1538 / ANSI B 16.5 150 # |
| 4 | Outlet | 63mm Female Instantaneous Adaptor |
| 5 | Material of Construction | Stainless Steel - SS304 |
| 6 | Reference | IS:5290 TYPE-A |

MATERIAL OF CONSTRUCTION:

| Sl No | Particular | Specification |
|-------|---------------------------------------|------------------------------|
| 1 | Body, Bonnet, Female outlet and parts | IS:3444 Gr.I (SS304) |
| 2 | Spindle | IS:3444 Gr.I (SS304) |
| 3 | Spring | Stainless Steel Wire IS:6258 |
| 4 | Hand Wheel | C.I. IS:210 FG200 |
| 5 | Washer | Rubber IS:937 TypeA |

TESTING AND QUALITY CONTROL:


| Sl No | Particular | Specification |
|-------|---------------------------|--|
| 1 | Dimensional check | Dimensions as per IS:5290 TypeB (See Drawing Below) |
| 2 | Water Tightness Seat Test | 14kgf/cm ² for 2.5 minutes. |
| 3 | Hydrostatic Pressure Test | 21kgf/cm ² for 2.5 minutes. |
| 4 | Performance requirements | Flowtest : 1800 lpm (min) at 7kg/cm ² pressure |
| 5 | Documentation | Internal inspection report ,supplier's certificates ,approved Laboratory test certificates |


OPERATIONAL/TECHNICAL DATA:

| Sl No | Particular | Specification |
|-------|------------------|---------------------------|
| 1 | Working Pressure | upto 10Kg/cm ² |
| 2 | Weight (Approx.) | 8.0kgs |

FINISH:

| Sl No | Particular | Specification |
|-------|------------|---|
| 1 | Body | Painted - Fire Red Color as per IS: 5 Shade No. 536 |
| 2 | Parts | Natural finish/ Polished |
| 3 | Wheel | Painted - Black Paint |

 No. 1107, B- 1, Ardente Office One, ITPL Main Road, Bangalore, KA 560048

 080 41178911

 info@variex.in

 www.variex.in

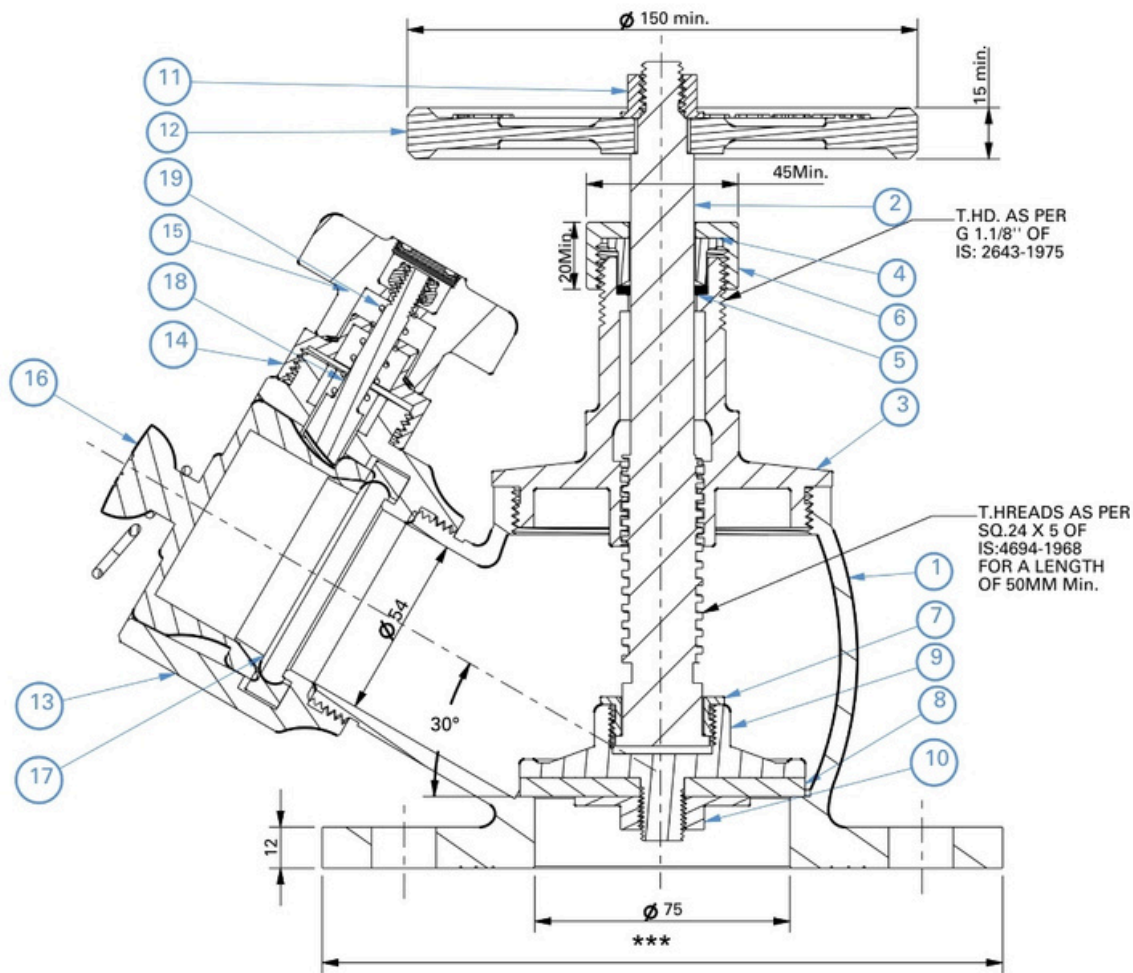


APPROVALS & MARKING :

| Sl No | Particular | Specification |
|-------|-------------------------|---|
| 1 | Approvals | ISI Marked (License No.) |
| 2 | Marking on Hydrant Body | VariEX/Size/YearofManufacture/ISINo/SL.No |

WARRANTY:

| Sl No | Particular | Specification |
|-------|----------------------|-----------------------------------|
| 1 | Warranty & Guarantee | 12 Months from the date of supply |



T.HD. AS PER
G 1.1/8" OF
IS: 2643-1975

T.HREADS AS PER
SQ.24 X 5 OF
IS:4694-1968
FOR A LENGTH
OF 50MM Min.

FLANGE DIMENSIONS

| TABLE | FLANGE Ø | PCD | HOLES | HOLE Ø |
|-----------------|----------|-------|-------|--------|
| IS: 1538 | 200mm | 160mm | 4 | 19 mm |
| ANSI B16.5 150# | 190mm | 152mm | 4 | 19 mm |

| 1 | BODY | SS 304 (IS:3444 Gr.1) | 11 | HEX.NUT | M.S. |
|-----------|---------------------|-----------------------|-----------|---------------|-----------------------|
| 2 | SPINDLE | SS 304 (IS:6603) | 12 | HAND WHEEL | C.S.IS : 210 |
| 3 | BONNET | SS 304 (IS:3444 Gr.1) | 13 | FEMALE OUTLET | SS 304 (IS:3444 Gr.1) |
| 4 | GLAND BUSH | SS 304 (IS:3444 Gr.1) | 14 | LOWER LUG | SS 304 (IS:3444 Gr.1) |
| 5 | GLAND PACKING | ASBESTOSE ROPE | 15 | UPPER LUG | SS 304 (IS:3444 Gr.1) |
| 6 | GLAND NUT | SS 304 (IS:3444 Gr.1) | 16 | BLANK CAP | PVC |
| 7 | CHECK NUT (SPINDLE) | SS 304 (IS:3444 Gr.1) | 17 | RUBBER RING | RUBBER IS:937 |
| 8 | SEAT WASHER | RUBBER IS:937 | 18 | CAM TOOTH | SS 304 (IS:3444 Gr.1) |
| 9 | STOP VALVE | SS 304 (IS:3444 Gr.1) | 19 | SPRING | SS 304 (IS:6528) |
| 10 | SEAT CHECK NUT | SS 304 (IS:3444 Gr.1) | 20 | CHAIN | GALVANIZED |
| NO. | DESCRIPTION | MATERIAL | NO. | DESCRIPTION | MATERIAL |
| PART LIST | | | PART LIST | | |



HYDRAULIC TEST:

| | |
|----------------|--------------------------------|
| SEAT TIGHTNESS | :14KGF/CM2. (FOR 2.5 MINIUTES) |
| BODY | :21KGF/CM2. (FOR 2.5 MINIUTES) |
| FLOW TEST | :900 LPM MIN @ 7KGF / CM2. |



Varistor Technologies Pvt. Ltd.

**TITLE : HYDRANT VALVE, SINGLE
OUTLET STAINLESS STEEL**

| SCALE | DRAWING NO: | SHEET | REV. |
|-------|-------------|--------|------|
| N.T.S | VRX-SHV | 1 OF 1 | 0 |